

8TH INTERNATIONAL STUDENT CONFERENCE ON LOCAL SAFETY AND SECURITY



UNIVERZITET CRNE GORE
PRAVNI FAKULTET



University of Maribor

Faculty of
Criminal Justice and Security



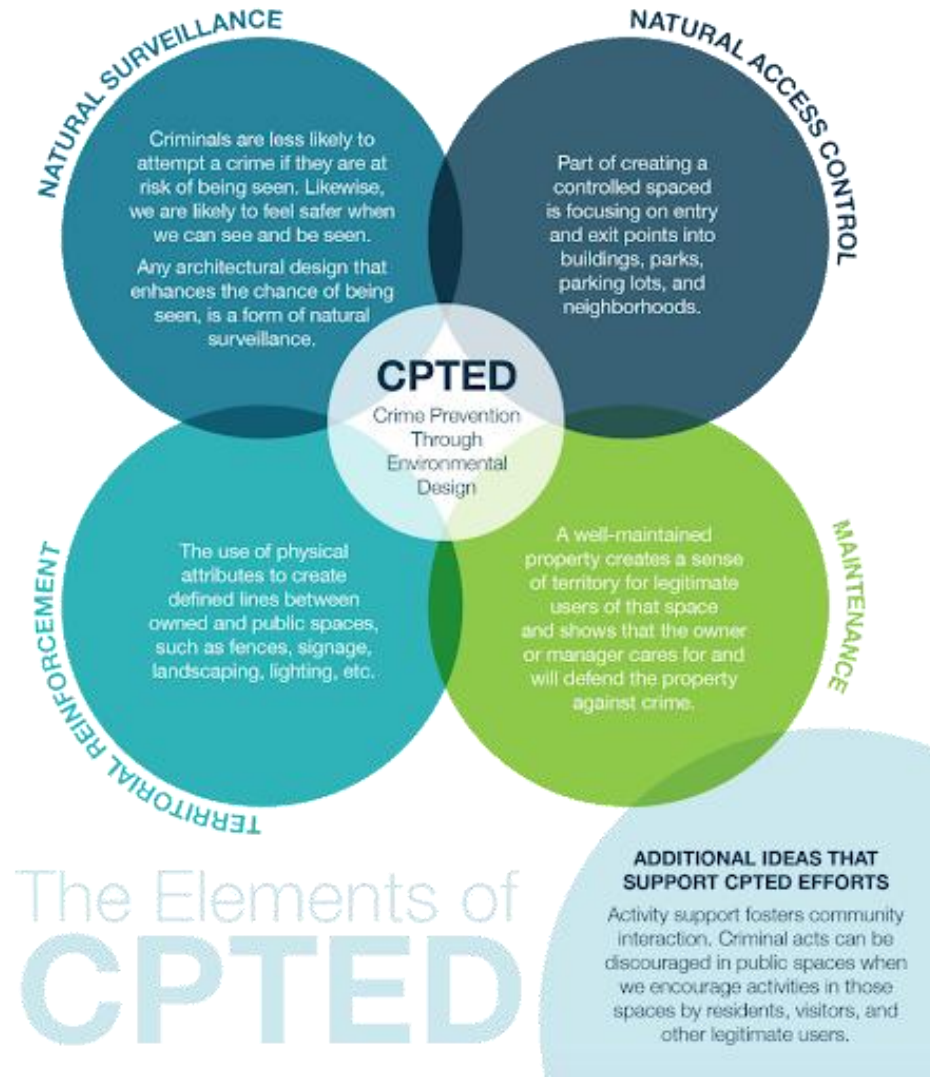
Slovenian Research and Innovation Agency

ENVIRONMENTAL PLANNING AND CONSTRUCTION

Nina Škornik, Eva Ogrin, Kaja Letnar in Nika Todorovič



INTRODUCTION

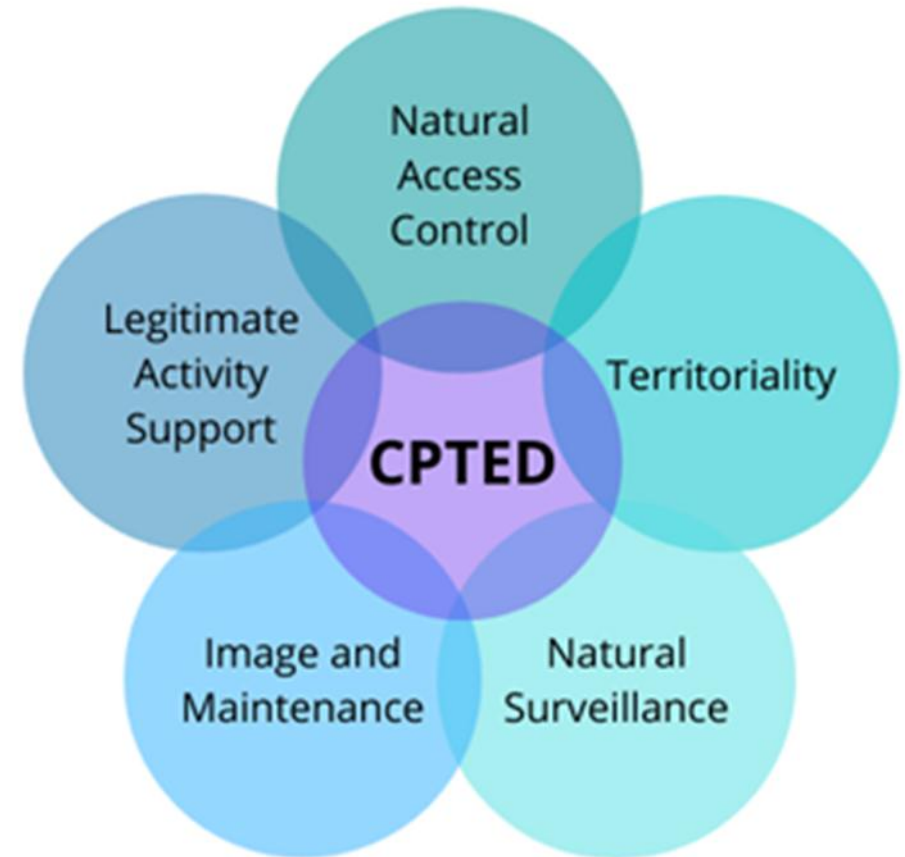


CPTED

- Based on strategic spatial planning to prevent crime
- Principles:
 1. natural surveillance,
 2. access control,
 3. territorial reinforcement and
 4. Maintenance

- Oscar Newman: Defensible Space:
Crime Prevention Through Urban Design

1. territoriality,
2. natural control,
3. support for legitimate activities and
4. image and maintenance of space.



Development of CPTED

3rd generation

Digital
elements

Sustainability
elements

2nd generation

Social cohesion

Community
inclusion

Cultural identity

Community capacity
thresholds

1st generation

Transparency

Lighting

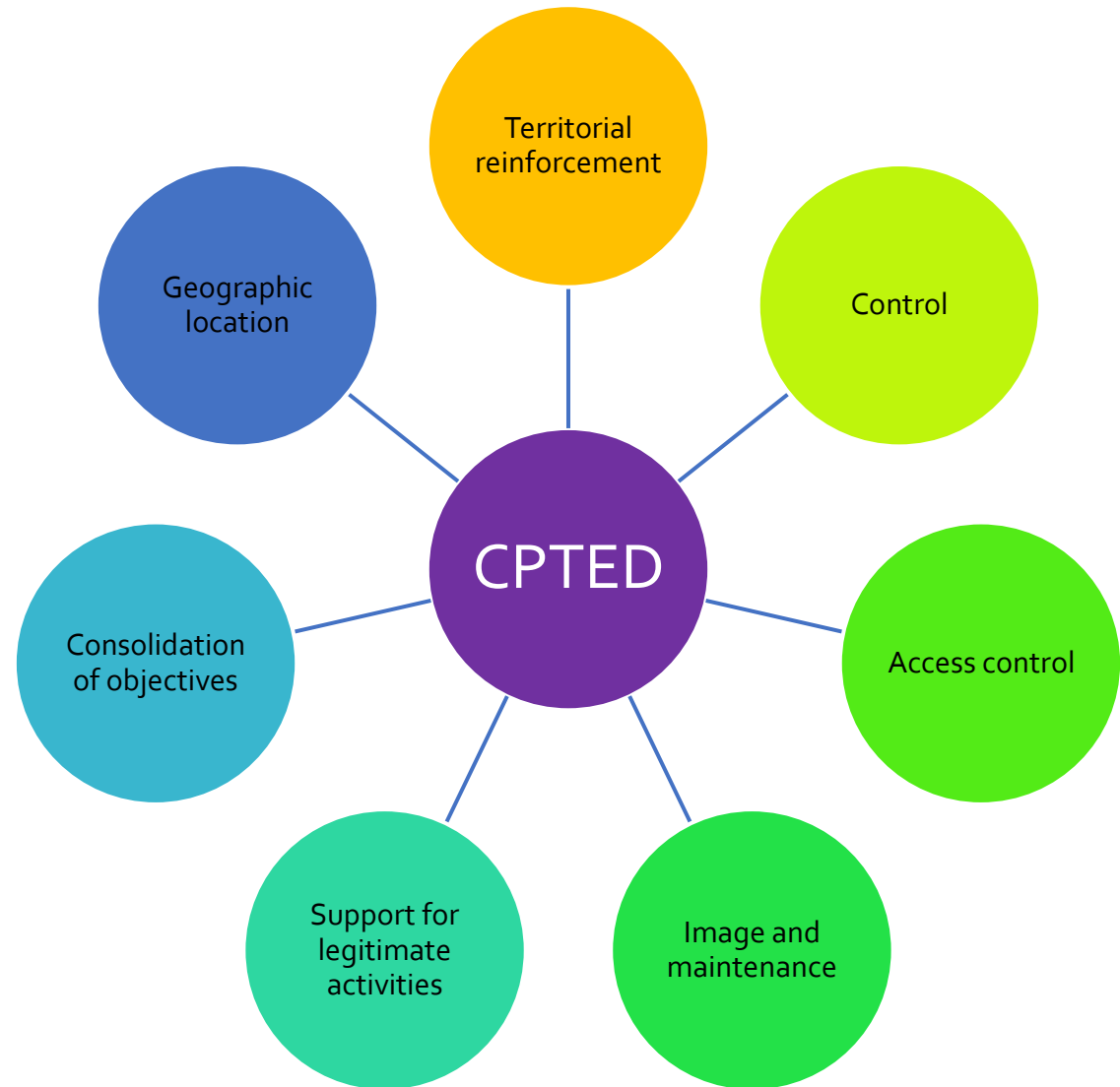
Access control

Public/private
space

Elements of CPTED

- Seven basic principles:

1. Territorial reinforcement
2. Control
3. Access control
4. Image and maintenance
5. Support for legitimate activities
6. Consolidation of objectives and
7. Geographic location.



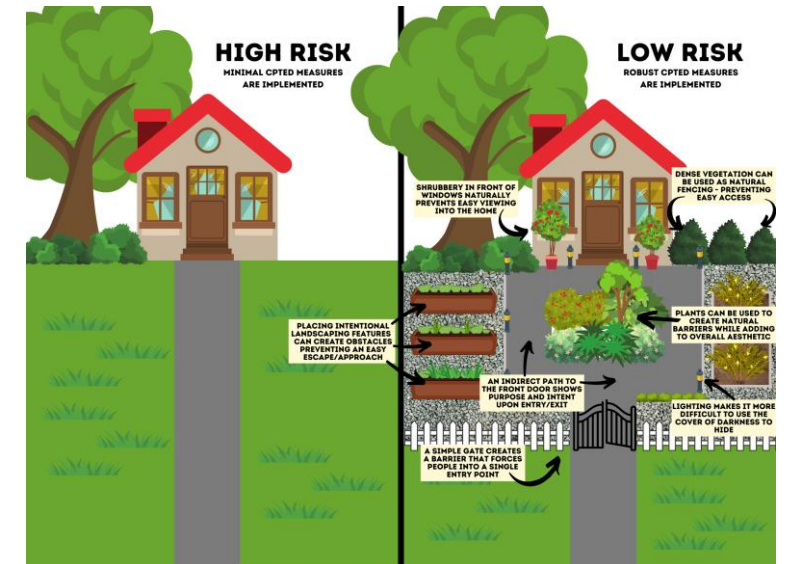
Slovenia and CPTED



- Often fragmented and disconnected measures
- The Law on Spatial Planning
- In practice: implementation is often not systematic; it depends on individual municipalities and their capacity or commitment

Opinion and conclusion

- Thoughtful placemaking is one of the key tools
- Important: differences between communities and environments



**THANK YOU FOR YOUR ATTENTION,
YOU CAN CLAP NOW**



**IF YOU HAVE ANY QUESTIONS, MY
FRIEND GOOGLE WILL ANSWER THEM...**