

9TH INTERNATIONAL STUDENT CONFERENCE ON LOCAL SAFETY AND SECURITY



University of Maribor

Faculty of
Criminal Justice and Security

VSB TECHNICAL
UNIVERSITY
OF OSTRAVA | FACULTY
OF SAFETY
ENGINEERING



Local Safety & Security in Public Transport in the Czech Republic

Jana Neuwirthová & David Vítek

Erasmus students at

University of Maribor

Faculty of Criminal Justice and Security



Erasmus+



Slovenian Research and Innovation Agency

Local Safety & Security in Public Transport in the Czech Republic

Jana Neuwirthová, David Vítek

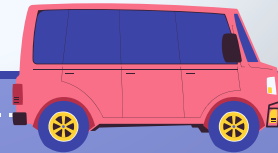


Table of contents

1

System overview

Introduction, types
of transport

2

Common risks

List of associated risks,
typical problems

3

Safety & security

Safety and security
measures,
Institutions and
Authorities

4

Summary

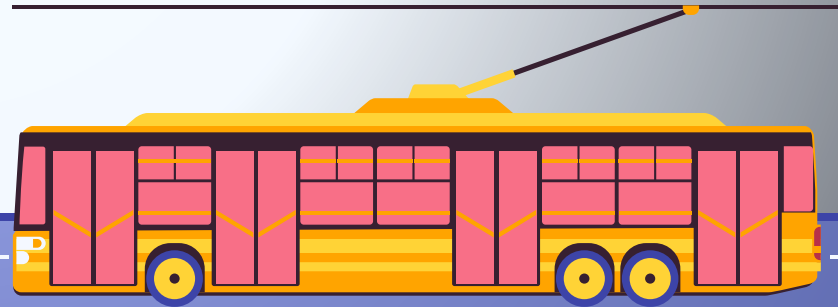
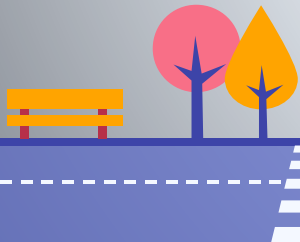
Safety tips, Conclusion



1

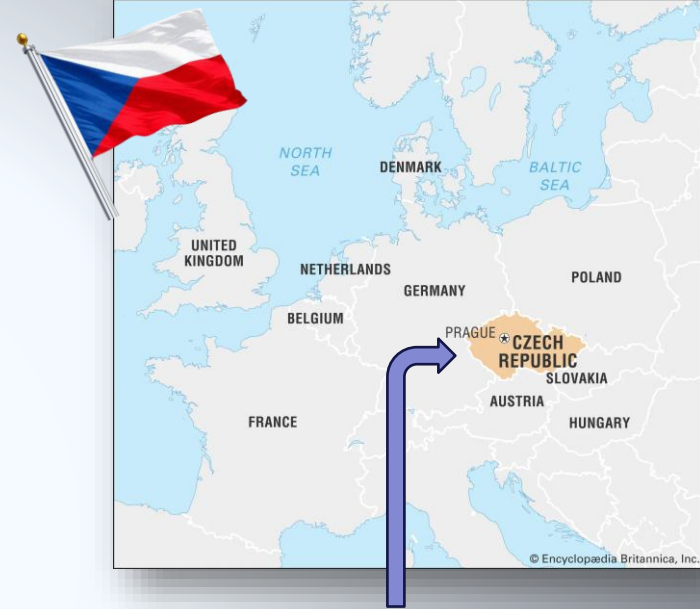
System overview

Introduction, types of transport



Introduction

- well-developed and widely used
- should be considered safe, reliable, and efficient
- some risks still exist (no such thing as zero risk)
- we will look at safety and security in more detail
- local – Prague, Ostrava



Types of transport



trains



buses



trams



shared bikes



metro



trolleybus

2

Common risks

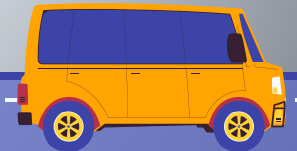
List of associated risks, typical problems



Risk identification – safety risks

- Slipping or tripping
- Falling inside the vehicle
- Overcrowded vehicles
- Accidents
- Train derailment
- Collision with a person

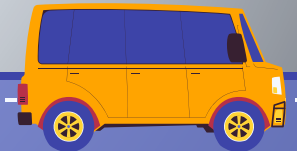
- Natural disaster
- Signaling failure
- Power outage
- Problems with tracks or roads
- Poor technical condition



Risk identification – security risks

- Pickpocketing
- Aggressive passengers
- Vandalism
- Harassment
- Overcrowding

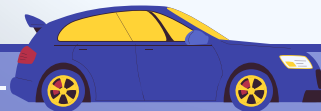
- Fare evasion
- Terrorist threats
- Cybersecurity threats
- Sabotage
- Suspicious items



3

Safety & Security

Institutions and authorities , Safety and security measures



Institutions and authorities

Police of the CR

Respond to crimes

Municipal Police

Monitor safety



Transport companies

Ticket inspectors - daily operation, safety rules

Emergency services

Paramedics, Firefighters - respond in case of accidents



Safety and security measures



- CCTV cameras – transport, stations
- Police presence with ticket inspectors
- Emergency buttons & intercoms
 - Lighting & signage
- Public awareness campaigns



Case study

The theft of cables along the railway line

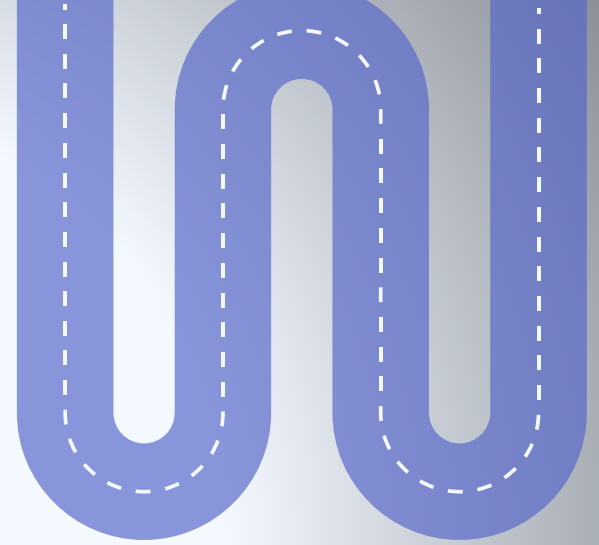
- Near by Ostrava
- Beginning of november
- Several kilograms of copper cables
- A six-kilometer section of the main railway line connecting the Ostrava region was taken out of service
- Three suspects → fifty meters of cable in the trunk of their car



4

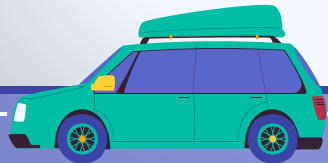
Summary

Safety tips, Conclusion



Safety tips

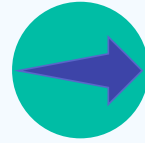
- Keep your belongings close to you at all times
- Be aware of your surroundings, especially in crowded areas
- Avoid empty or poorly lit areas at night
- Do not leave your luggage unattended
- Follow instructions from transport staff and signs
- Use official apps or ticket machines for tickets



Conclusion



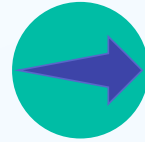
Public transport is modern.



Authorities and transport companies actively ensure safety and security.



Risks exist, but we try to prevent them.



Various measures help prevent incidents and protect passengers.



**Thank you for your
attention**

Jana Neuwirthová, David Vítek

