

9TH INTERNATIONAL STUDENT CONFERENCE ON LOCAL SAFETY AND SECURITY



University of Maribor

Faculty of
Criminal Justice and Security



Erasmus+



Slovenian Research and Innovation Agency

PHYSICAL AND SOCIAL (DIS)ORDER IN RELATION TO SAFETY IN LOCAL COMMUNITIES

Tinkara Domjanič & Lucija Jeseničnik

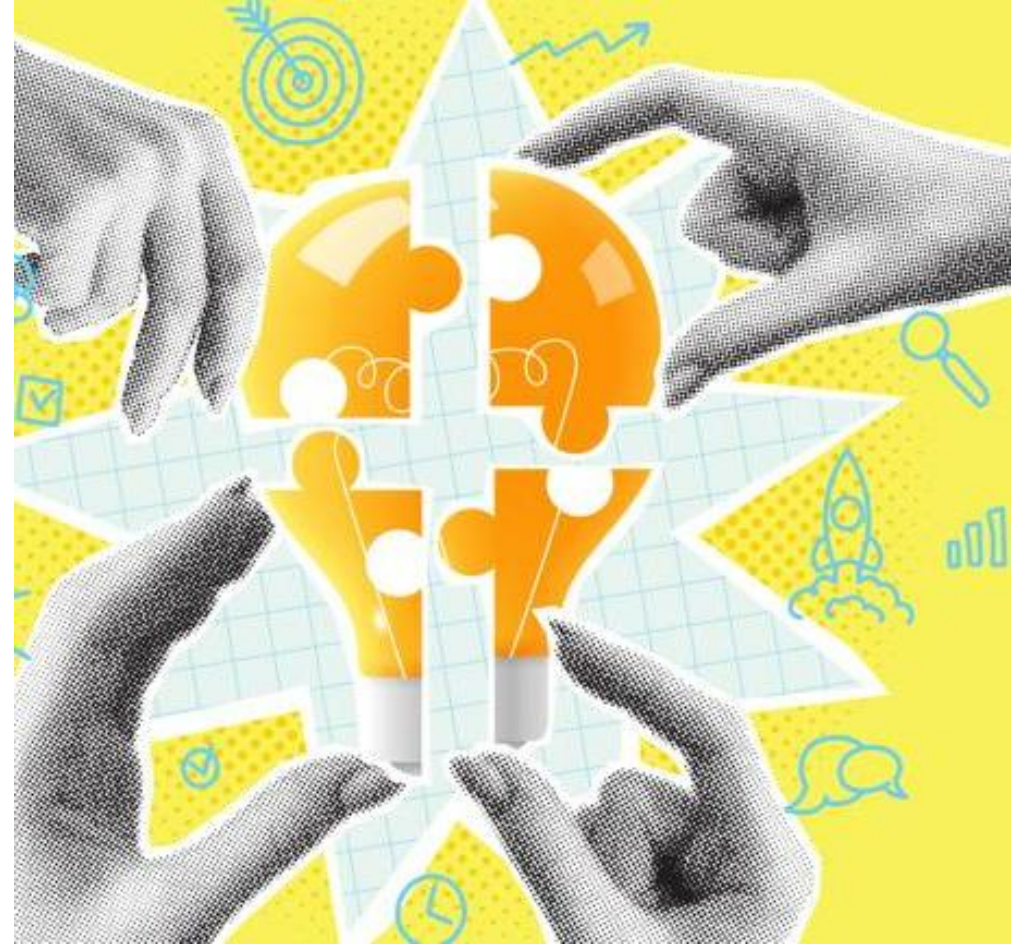
Broken Windows Theory



- Wilson and Kellin (1982)
- Minor signs of disorder → lack of control and interest in solving problems
- Disorder:
 - Attracts offenders
 - Increases fear of crime among residents
- Addressing even the smallest signs of disorder and unwanted behaviour
- Impact in the United States of America → zero tolerance
- Disagreement (property crime)

Theory of Social Disorganisation

- Weak social ties, reduced informal control
→ disorder and crime
- SOCIAL COHESION
 - Strong interpersonal connections, mutual trust, and shared values
 - Maintenance of social order through informal social control and response to deviant behaviour
- COLLECTIVE EFFICACY
 - Active willingness of residents to intervene and address problems



Social Disorder

Antisocial behaviour

- Noise, harassment, vandalism
- Unpredictable and potentially dangerous

Alcohol and drug abuse

- Association with violence and conflict

Homelessness / begging

- Indicator of social vulnerability within the community and absence of control

Juvenile delinquency

- Concentrated in socially disadvantaged environments
- Indicates a lack of supervision or control
- Peer influence or intergenerational transmission



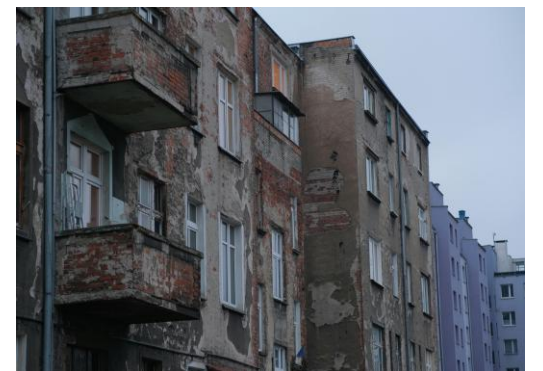
Physical disorder

Neighborhood degradation → lack of order and control

- reduced sense of safety
- avoidance

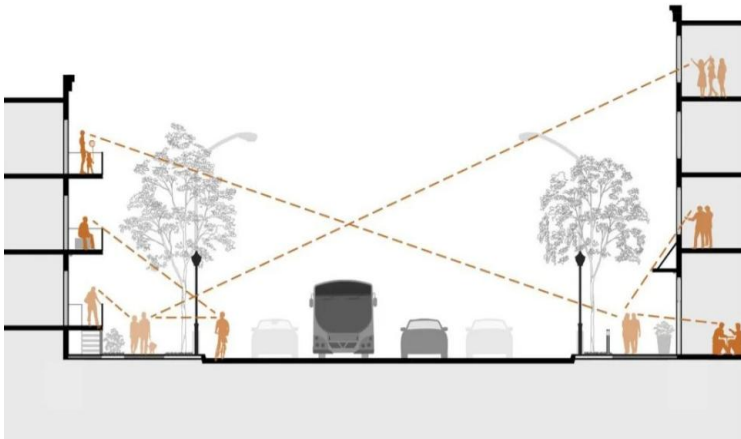
Signs (active behavior or neglect of maintenance)

- abandoned/decaying buildings and cars
- litter
- graffiti
- illegal parking
- vandalism
- poorly maintained land



Measures - Crime Prevention Through Environmental Design

- Use of built environment to reduce crime and fear of crime
- 4 main principles:
 - natural surveillance (additional lighting, improved visibility)
 - territorial reinforcement (public and private space, sense of informal ownership)
 - access control (fences barriers)
 - maintenance



Community Policing

- Cooperation Between Police and Community
- Guiding activities according to the actual needs of the community
- Visible police presence provides a sense of control
- Ongoing detection and elimination of disorder
- Head of the Police District
 - work directly with residents
 - personal contact, counseling, and awareness-raising



Situational Prevention

- Behaviour results from interaction between an individual and their environment.
- By shaping the situation, opportunities for crime can be reduced
- 5 groups of techniques:
 - Increasing the effort
 - Increasing the risk
 - Reducing the rewards
 - Reducing provocations
 - Removing excuses

Increase the effort	Increase the risk	Reduce the rewards	Reduce provocations	Remove excuses
Target harden	Extend guardianship	Conceal targets	Reduce frustrations and stress	Set rules
Control access to facilities	Assist natural surveillance	Remove targets	Avoid disputes	Post instructions
Screen exits	Reduce anonymity	Identify property	Reduce emotional arousal	Alert conscience
Deflect offenders	Utilize place managers	Disrupt markets	Neutralize peer pressure	Assist compliance
Control tools/weapons	Strengthen formal surveillance	Deny benefits	Discourage imitation	Control drugs and alcohol

Social prevention in Slovenia

social welfare programs

- run by NGOs, complementing public services
- social inclusion, reduce inequalities, and target children, adolescents, and their families
- multi-generational centres, and psychosocial support

NO Hate Speech Movement (2013)

- tolerance, intercultural dialogue, and fighting discrimination

Kralji ulice street newspaper

- Society for Help and Self-Help of the Homeless
- Awareness, support, access to social resources



Physical upkeep in Slovenia

Clean-up campaigns

- Run by NGOs, schools, local government



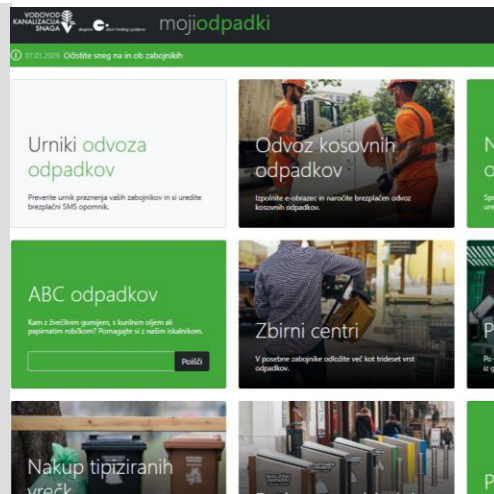
Fines

- Public Order and Peace Protection Act (ZJRM-2) → graffiti 400€-600€



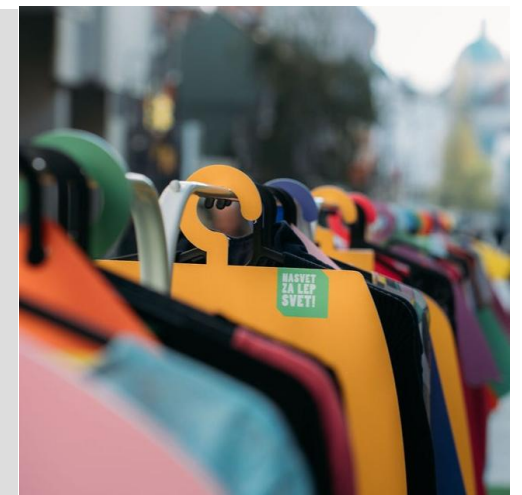
Online resources

- JP VOKA SNAGA (public utility company) - trash recycling and sorting, collection centers



Other initiatives

- Nasvet za lep svet! (Advice for a beautiful world!) - reuse, repair and mindful purchasing



Conclusion

- Social and physical disorder are inevitably connected
- Social disorder has a stronger impact than physical
- Most researches focus on the impact of disorder on fear of crime
- Prevention:
 - Well-rounded and balanced approach
 - Cooperation
 - Addressing causes rather than symptoms



