

9TH INTERNATIONAL STUDENT CONFERENCE ON LOCAL SAFETY AND SECURITY



University of Maribor

Faculty of
Criminal Justice and Security



Erasmus+



Slovenian Research and Innovation Agency

ELDERLY HOMELESS DRUG USERS: SOCIAL EXCLUSION AND SAFETY CHALLENGES FOR LOCAL COMMUNITIES

Neža Vodeb & Biba Bernik

PROJECT

PURPOSE

- to identify current security challenges
- to analyze the perspectives of NGOs on ensuring security in local communities
- to examine cooperation among stakeholders (NGOs, police, municipality)
- to highlight additional practical needs

OBJECTIVE

- to compare the current situation with existing documents
- to assess current cooperation among stakeholders (NGOs, police, municipality)
- to identify security risks
- to formulate recommendations and possible solutions

TERMS

Social exclusion

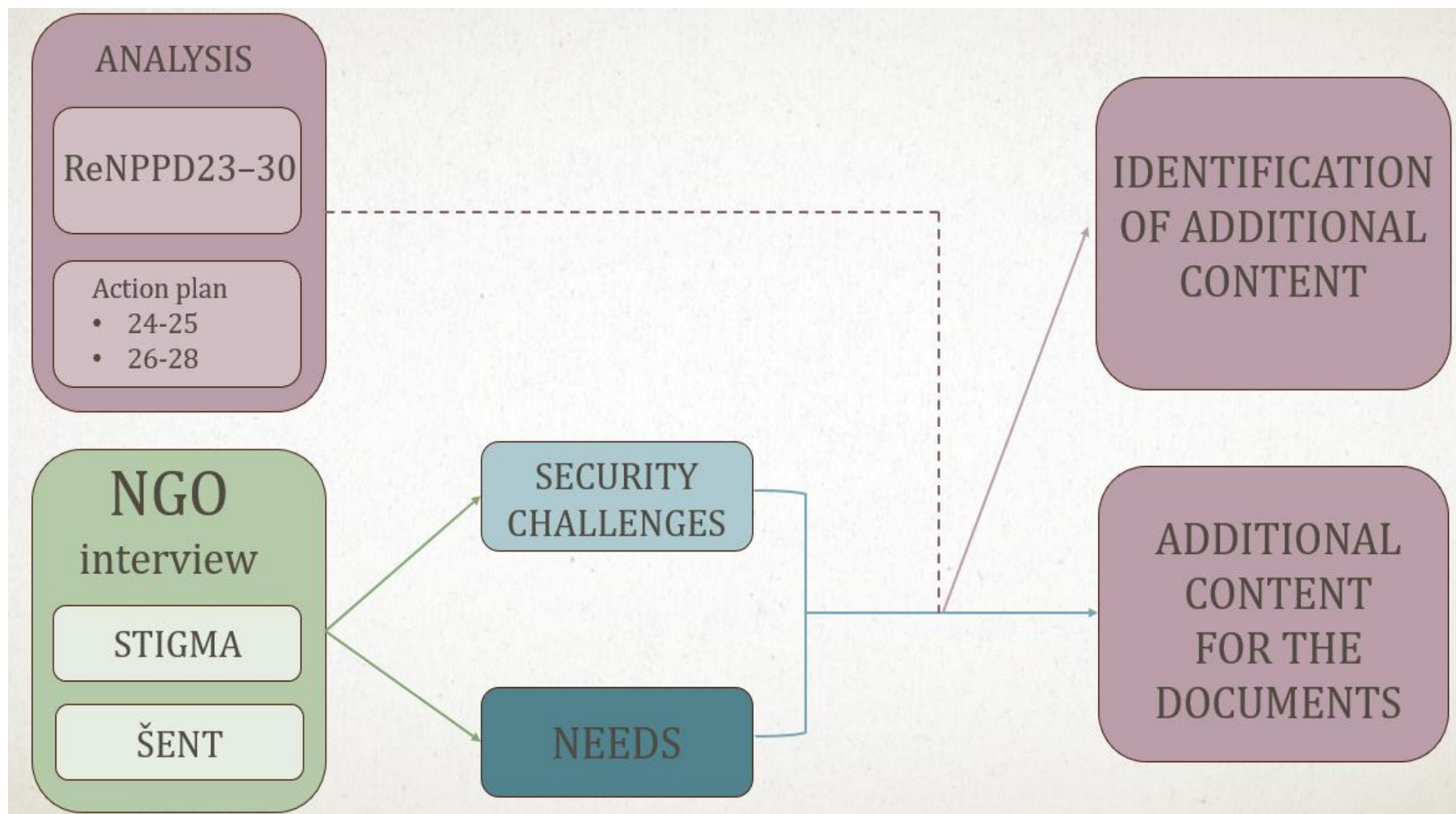
The elderly
Population

Homelessness

Drugs

Safety challenges
in the local
community

PROJECT RESEARCH PLAN



STRATEGIC AND OPERATIVE DOCUMENTS

Elderly homeless users of (illegal) drugs” = unrecognized term

- Talking about SOCIAL EXCLUSION
- Police – presence linked primarily to law enforcement
- What about community policing?
- The goal of addressing homelessness among illicit drug users ends in 2025
- Housing First is forgotten
- Some goals remain only on paper or are very general

NGO's PERSPECTIVE

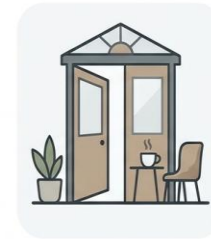
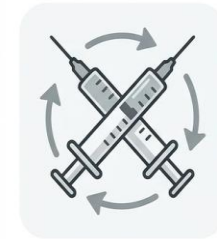
STIGMA (2 day centers)

- needle and syringe exchange
- outreach work
- drop-in center
- safe house
- collaboration with UPRO
- counseling
- drug testing
- community-based testing

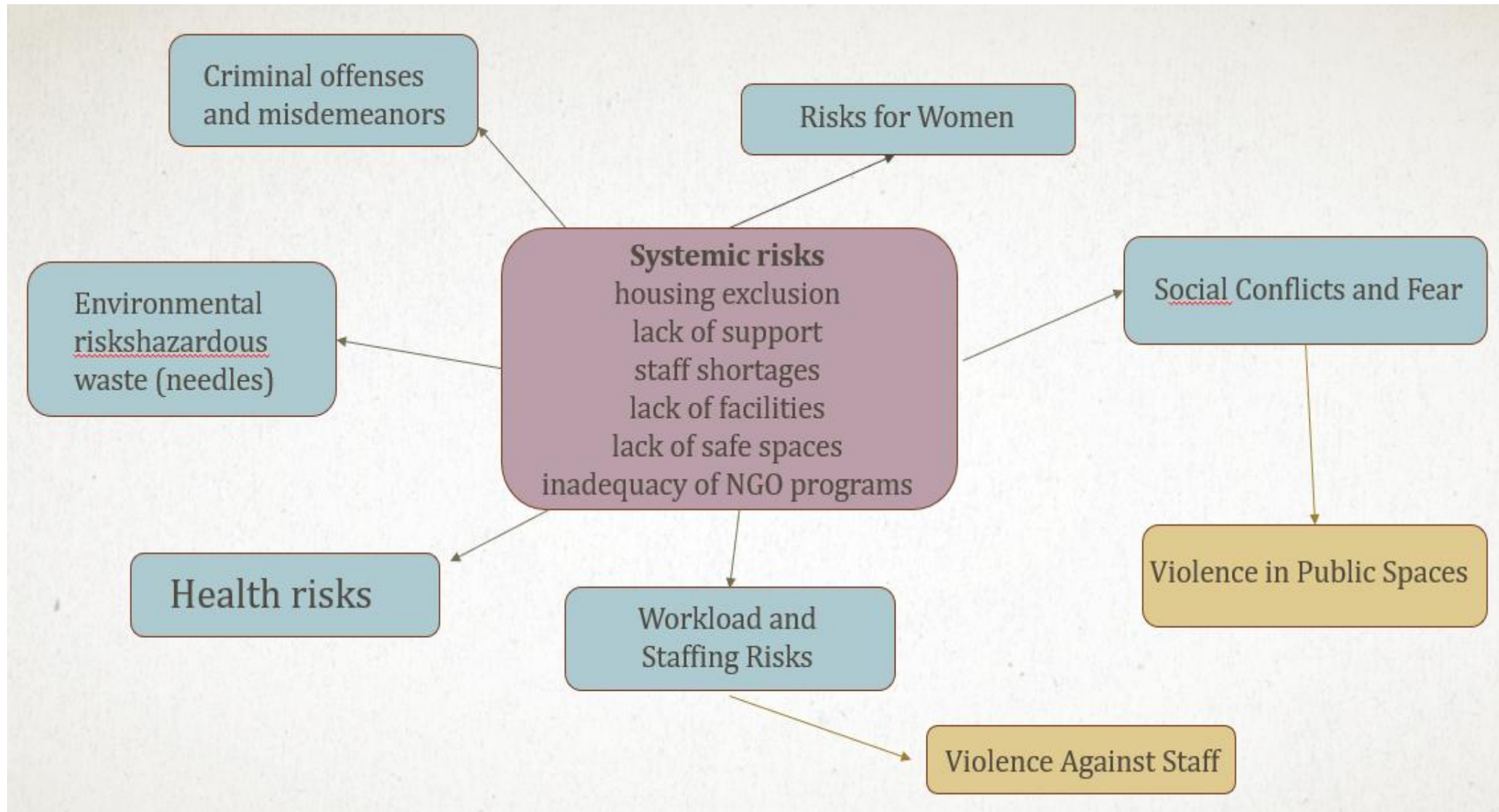
DRUŠTVO
za zmanjševanje
škoda zaradi drog
Stigma

ŠENT (multiple centers)

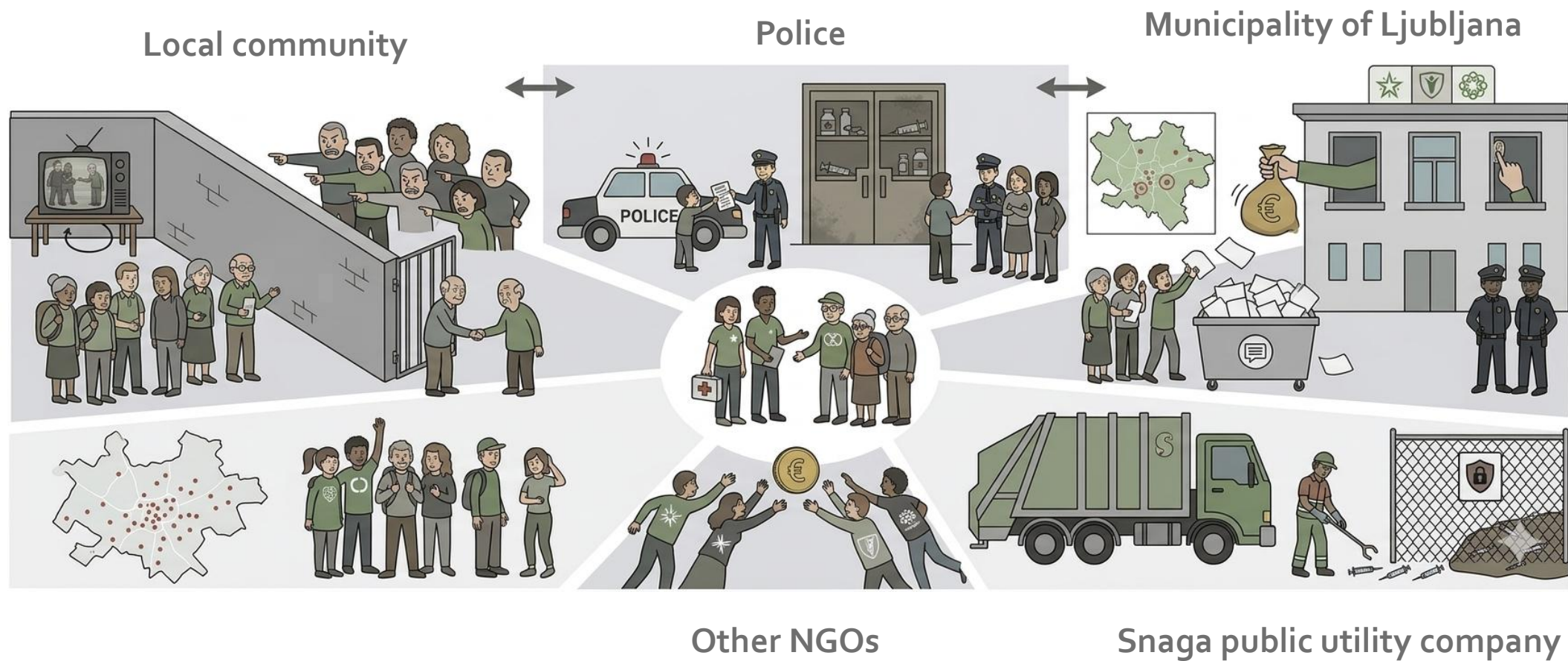
- needle and syringe exchange
- DC
- shelter
- safe room (currently 1)
- residential communities
- stress-relief counseling



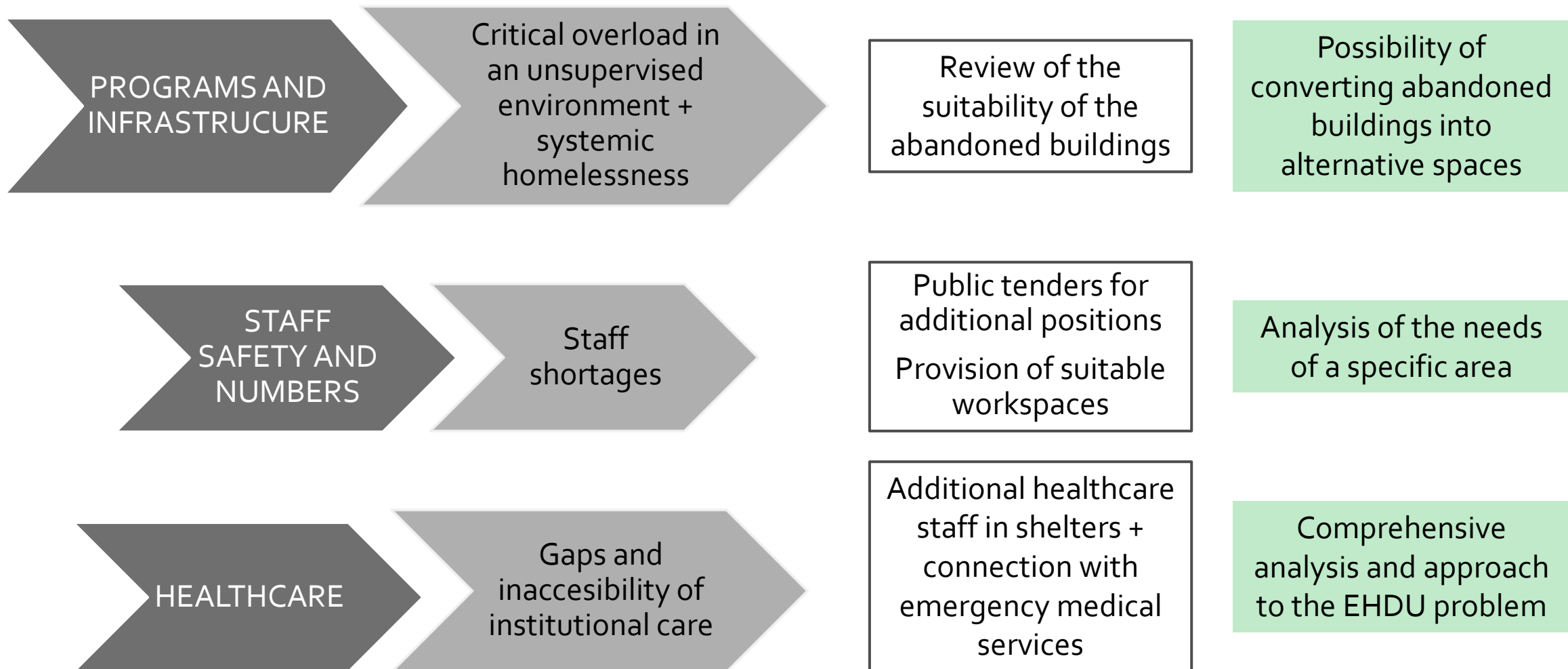
RISK IDENTIFICATION



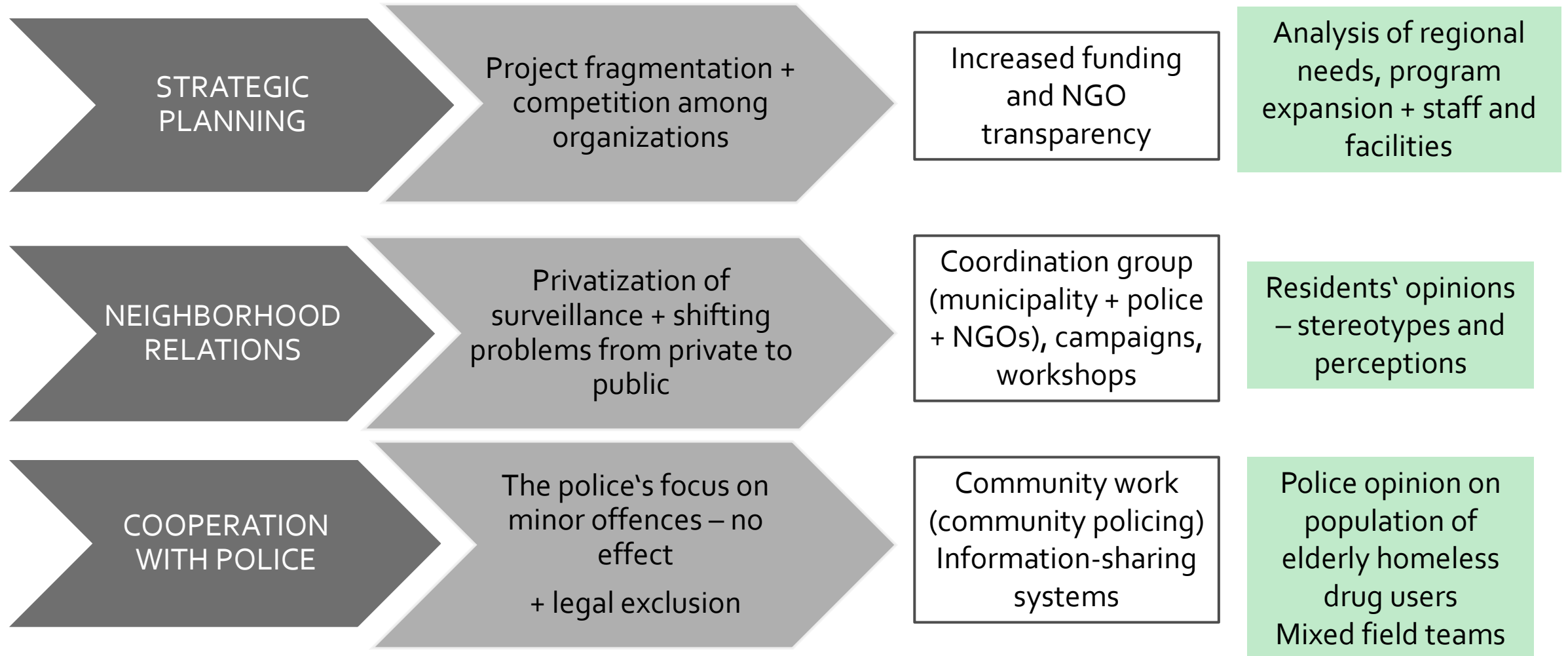
RELATIONSHIP DYNAMICS



ADDITIONAL CONTENT FOR THE DOCUMENTS



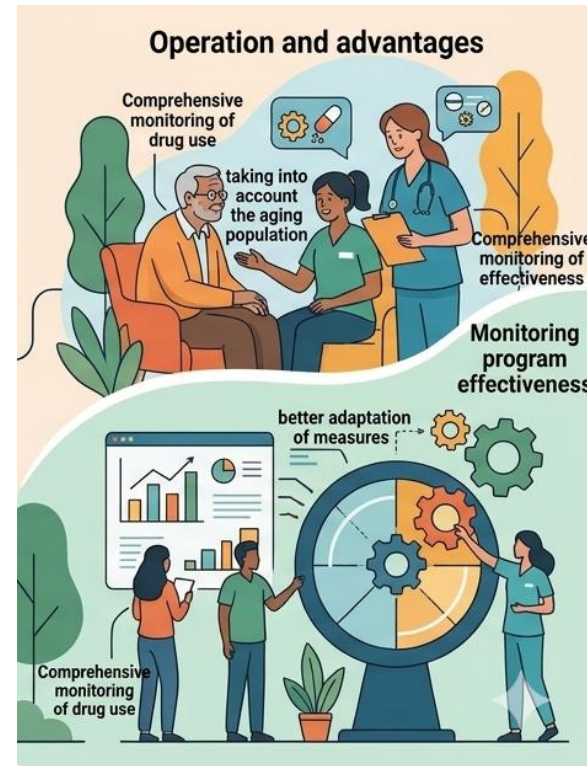
IDENTIFICATION OF ADDITIONAL CONTENT



COMPREHENSIVE CARE AND LOCATION (HOUSING FIRST ?)

Starting Point / Purpose

- Addressing the complexity of the EHDU issue
- Reducing social exclusion among users
- The need for integrated care in one location



Operation and advantages

- Comprehensive monitoring of drug use + taking into account the aging population
- Monitoring program effectiveness+ better adaptation of measures

A single facility that includes:
a safe room + day center (DC) + shelter
+ clinic + additional support spaces





YOU MADE THIS PLIGHT NOW MAKE IT RIGHT.

“Harm reduction is a test of our emotional intelligence.”

SAFE SOCIETY IS SUCCESSFUL SOCIETY